

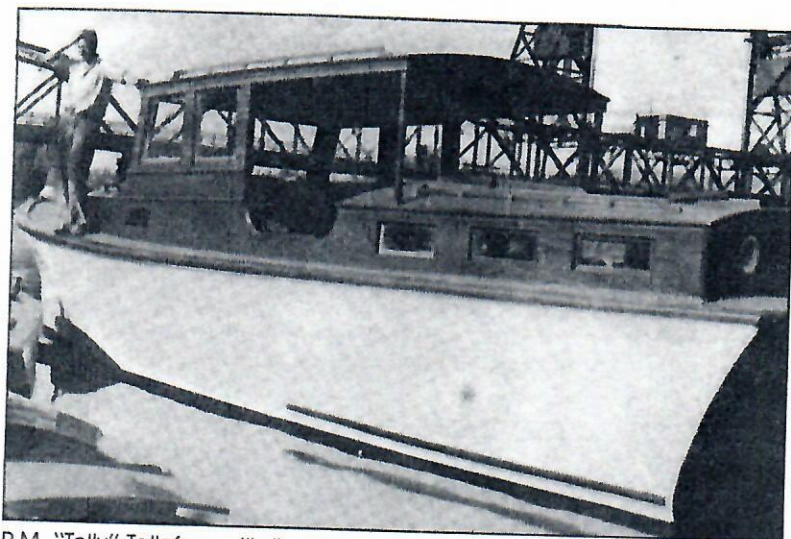
# TOLLYCRAFT CORPORATION

... THE WORKS



Builders of Luxury Pleasure Cruisers and Yachts





R.M. "Tolly" Tollefson with the first cruiser he built in 1936.



Tollycraft's original manufacturing facilities.

*My 50'*

Tollycraft's reputation for high quality and lasting beauty grew rapidly thanks to yachts such as this 1968 50-footer.



And continues to grow with new models like the 64' Motor Yacht



## *Read This* BACKGROUND

Tollycraft Corporation is a company, which for the past 46 years, has built pleasure cruisers and yachts of extraordinary quality. Purebred designs of graceful, classic profiles.

The Company's founder and Chairman, Mr. R. M. "Tolly" Tollefson, started his business career in the early 1930's building fine furniture, cabinets and a few custom boats. Eventually, he directed the Company's attention to building boats exclusively. It was a natural change of direction, with a dedicated group of proficient cabinet makers and his own expert knowledge of yacht design, Tollefson launched a complete line of wood cruisers. Within a short period of time each model earned a reputation as a quality product, built with the finest materials and skilled labor available.

As the young marine industry grew and advanced, so did Tollycraft, improving on sound ideas or developing innovative new ones. When fiberglass was first introduced as a substitute for wood, Tollycraft carefully analyzed the long-term advantages and disadvantages before making the change. The conversion to molded fiberglass during the late 1960's kept Tollycraft abreast of modern technology and competitive with the world's leading pleasure boat manufacturers. In the early 1970's, when OPEC's strangle hold on oil had sent prices sky-high, Tollycraft was quick to introduce new fuel efficient hull and propulsion designs.

Tollycraft is much the same today as it was 46 years ago, with R. M. Tollefson still active in design and development. He has structured the Company with executives who are much like himself, dedicated to giving every customer the finest yacht available. These are people who have spent most all of their working years at Tollycraft and who still feel a slight chill run up their back everytime they see a Tollycraft. They understand why people buy cruising yachts, and what quality they look for. Proud, dedicated people committed to constantly improving each and every new Tollycraft.

By keeping Tollycraft small and more importantly, setting his goals at the highest degree of quality, R. M. Tollefson established a pattern of success that will endure.



# YCRAFT (continued)

Final interior finish work is next to be undertaken. Solid teak and teak veneer is precisely fit and installed in areas that could not be pre-rigged. Connections for wiring and plumbing from hull-to-deck are also completed. Thick pile carpeting, carpet pad and beautiful upholstery are installed, finishing off the rich interior.

As the completed boat moves toward the shipping department, additional inspections are made of interior and exterior finishes. Imperfections are identified and corrected.

Once in the shipping department, every part of this new Tollycraft is again inspected. Plumbing and electrical systems are checked; engines and generators are run; shafts are checked for alignment and final packaging for shipping is done. This extensive inspection insures the delivery of every Tollycraft with a minimum amount of dealer preparation.

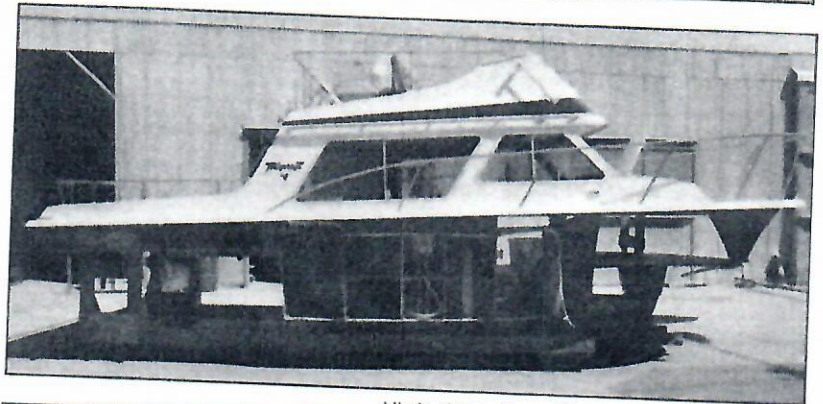
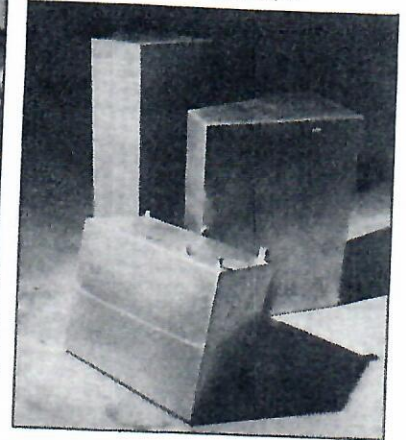
Modern technology, excellence in engineering, specialized craftsmen, superb materials and strict quality controls, are all major reasons why Tollycraft boats are held in the highest esteem by their owners.

In today's market of low quality, high volume products, it is refreshing to board a new Tollycraft. The meticulous attention to detail and unswerving commitment to excellence is overwhelmingly evident. Through years of constant growth and dedication to customer satisfaction, Tollycraft Corporation has established a strong, lasting reputation — its' investment in the future.



A 43' Motor Yacht is checked out and packaged for shipment.

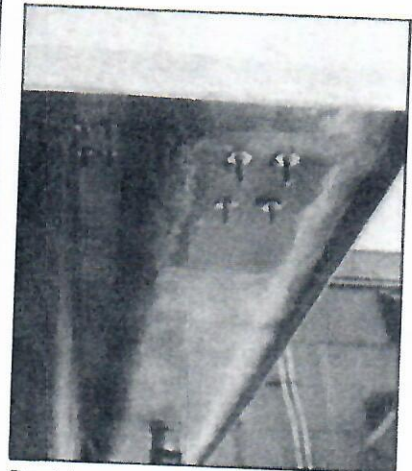
High quality aluminum fuel tanks are standard on all Tollys.



High strength unitized construction.



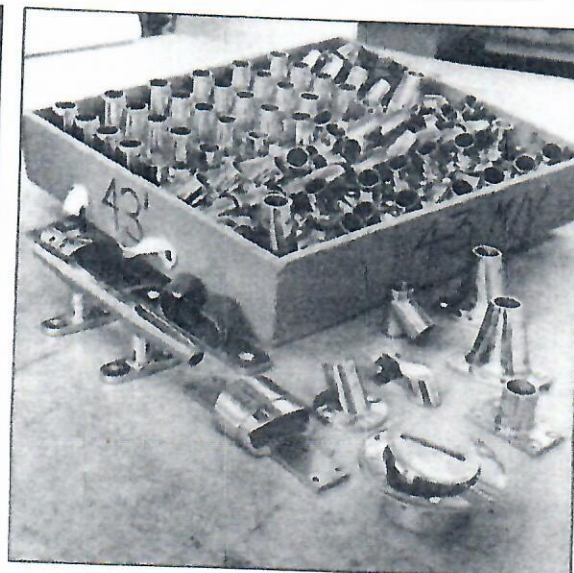
Functional instrument panels.



Deck hardware is through bolted for maximum strength.



Active upholstery fabrics make up interiors on every Tollycraft.



Stainless steel deck hardware insures high strength low maintenance.



# TAKE A LOOK INSIDE TOLLYCRAFT

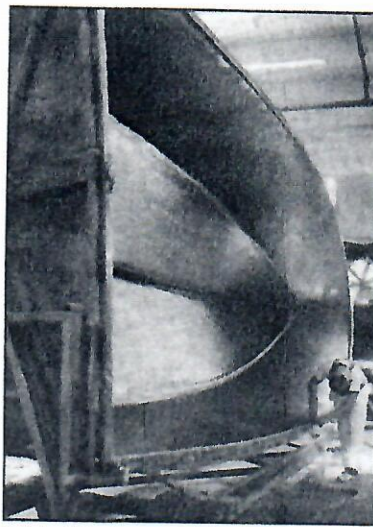
Tollycraft Corporation, located in Kelso, Washington, has a modern manufacturing facility covering over 156,000 square feet. Approximately 80% of every part in a Tollycraft is manufactured in-house, assuring owners of high quality components, built without compromise.

Each Tollycraft begins its process in the fiberglass shop, where the fiberglass hull, deck and command bridge are molded. Highly polished molds are used to insure an equally smooth part.

The process begins with the spraying of the pigmented resin (gel-coat) against the mold surface. A back-up coat follows. Layers of fiberglass mat, woven roving, and cloth saturated with polyester resin, are hand laid into the mold until the desired specifications are reached. The next step includes filling the keel with silica and resin for a strong, solid keel. Lastly, four fiberglass longitudinal stringers, filled with high density, closed cell foam, are integrally laminated to the hull bottom. These provide surfaces to mount equipment and most importantly to give the hull added rigidity and strength in rough seas. The complete hull is then moved into an assembly area along with the fiberglass deck and command bridge. Here each part will be outfitted with its respective equipment. Gauges, controls, and rails will be fitted to the bridge. Windows, rails, headliner, and exterior hardware are installed on the deck cabin unit. At approximately the same time, the hull is having tanks, engines, plumbing and other bilge work completed.

The next stage is the construction of interior components. They are built separately of the hull, deck & bridge and will eventually be pre-rigged and 95% complete before installation in the hull.

The interior cabin units are built from the finest materials. Thai teak, clear grain mahogany and solid core plywood are used throughout every Tollycraft.

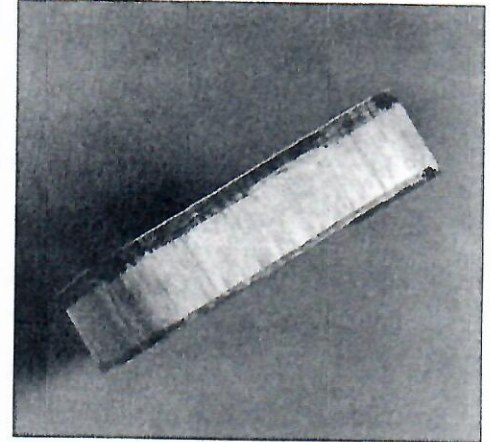


26' hull in the mold being readied for stringer installation.

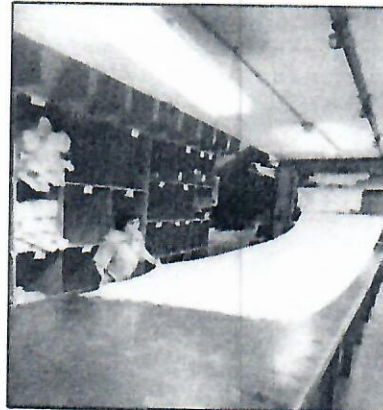
Workers applying resin to fiberglass mat on command bridge mold.



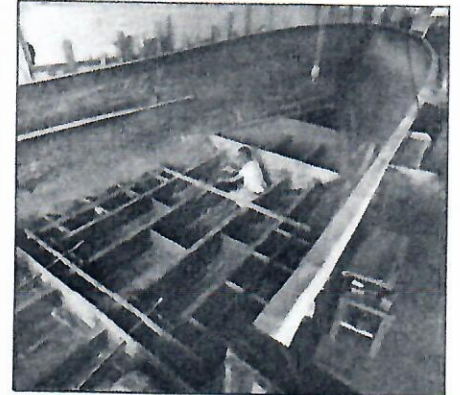
43' deck being separated from the mold.



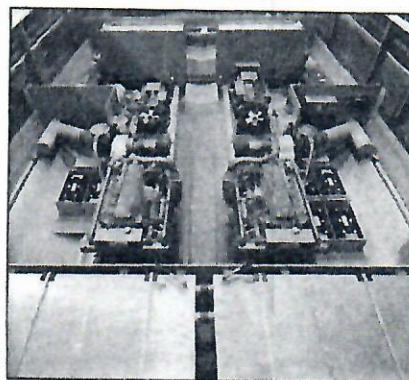
Horizontal deck surfaces are reinforced with end grain balsa.



All molded pieces are formed from pre-cut fiberglass material.



43' hull being prepared for fuel tanks and engines. (Note stringers and cross braces.)



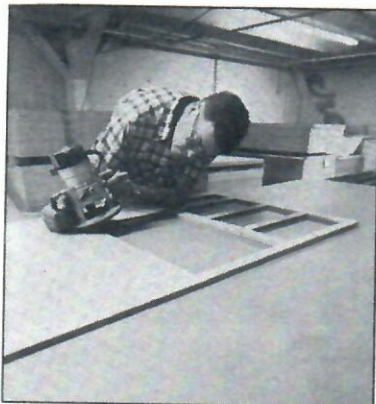
61' hull outfitted with tanks, engines, wiring and plumbing.



Fully outfitted command bridge with gauges and controls.



A worker uses wood pattern to cut face frame for galley cabinet.



Full size wood patterns are used to build each Tollycraft.

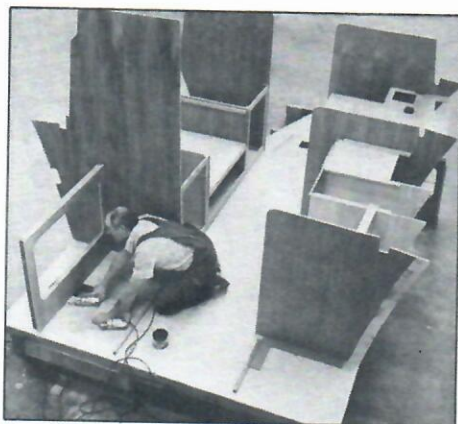
## TAKE A LOOK INSIDE TOLL

Each cabin unit takes shape in the millshop. Master patterns for each interior piece are used to cut wood parts. This not only saves time in construction, but also give every Tollycraft interior, a precision fit.

After the interior pieces are cut, they are moved to another area where highly skilled craftsmen will fit them together. Jigs and more patterns will be used to accurately place bulkheads and other components. These parts are then permanently fastened into place with mahogany cleat stock which is both glued and screwed. Once all bulkheads, counters, lockers, cabinets and other parts are in place, the interior will be moved to an adjacent area to be completed. Areas to be painted are hand sanded prior to painting. Teak surfaces are hand rubbed to a satin finish and meticulously detailed. Next, the cabin unit is totally outfitted with wiring and plumbing which is securely harnessed and caulked with sealant where it passes through bulkheads. Appliances, sinks, wallpapers, and formica are installed completing the pre-rigging. The cabin unit is then ready to be installed into a hull.



Cabin interiors are glued and screwed together.



Bulkheads and cabinets are placed with patterns and jigs to insure a precise fit.



Forward cabin interior being sprayed in the dust-free paint rooms.



The interior unit is rigged and set into an outfitted hull.

The hull, deck, bridge and cabin unit are all brought together into a rigging area. Here, each fully outfitted, unitized part will be integrally bonded together. First, the finished cabin unit is set into the completely rigged hull. Next, the deck and bridge are lifted above and set onto the hull. An inspection is then made to make sure each piece is properly fitted and that no hoses or lines are pinched. With this inspection complete, the boat is ready to be physically bonded into one piece. This is done by fiberglassing bulkheads to the hullsides and lag bolting through the floor, into the full length fiberglass hull stringers. The gunwale is then sealed and aluminum trim placed over it. This provides a strong, cosmetically attractive joint.

Bulkheads are fiberglassed to the hull sides, and floors are lag bolted into the fiberglass stringers.



The completely rigged deck/bridge is set over the interior and onto the hull.



The deck/bridge is sealed and attached to the hull.





Development work on the 61' Motor Yacht.

## FUTURE OUTLOOK

The marine industry is unique in many aspects. Tollycraft recognizes this and realizes the need to react quickly to the changing market. The corporate structure and close-knit dealer organization allow us to do just that, providing access to new, untapped markets.

For some time now, we have seen a major shift to larger high-quality yachts. Tollycraft has met this demand with state of the art, sophisticated Motor Yachts.

Tollycraft's insight over the past years has helped launch many outstanding models. In the early 1970's the entire model line was redesigned for maximum fuel efficiency. The 1980's has brought several completely new models; the 61' Motor Yacht, 48' Convertible, 39' Fast Passage sailboat and 34' Convertible.

Developmental projects of this size and number are extremely expensive and time consuming. Tollycraft believes however, to grow and remain strong it must continue offering new models that will be in greater demand in coming years.

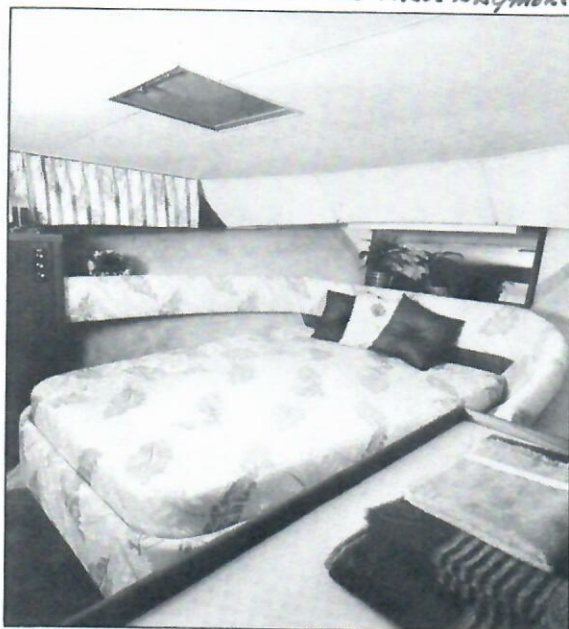
It is this type of corporate philosophy, plus an excellent reputation for styling, quality, engineering and performance that continues to keep Tollycraft's market position strong and product value high.



The Fast Passage 39 is an excellent example of Tollycraft's versatility and commitment to growth.

*We don't build these anymore*

Styling, quality, and finishing detail is on a par with the finest boat builders in the world.





# BOARD OF DIRECTORS

Kent Bowerly ..... Vice President Marketing, Tollycraft Corporation  
 Robert L. Burpee ..... Director, Pacific Diesel Power  
 R. Graham Cross ..... Cross & Hadley, P.S. Attorneys At Law  
 Bruce T. Dahlquist ..... Executive Vice President, Treasurer, Tollycraft Corporation  
 Bruce O. Hallberg ..... President & Chief Executive Officer, Tollycraft Corporation  
 J. B. Mossop ..... Retired, Formerly President Hardwood, Inc.  
 Steven Charles Thompson .. Foster & Marshall/American Express Inc.  
 R. M. Tollefson ..... Chairman of the Board, Tollycraft Corporation  
 Phillip M. Wertheimer ..... Director, Longview Fibre Company

## EXECUTIVE OFFICERS



R. M. Tollefson  
Chairman of the Board  
Founder



Bruce O. Hallberg  
President &  
Chief Executive Officer  
1959



Bruce T. Dahlquist  
Executive Vice President  
& Treasurer  
1959



Kent Bowerly  
Vice President Marketing  
1967

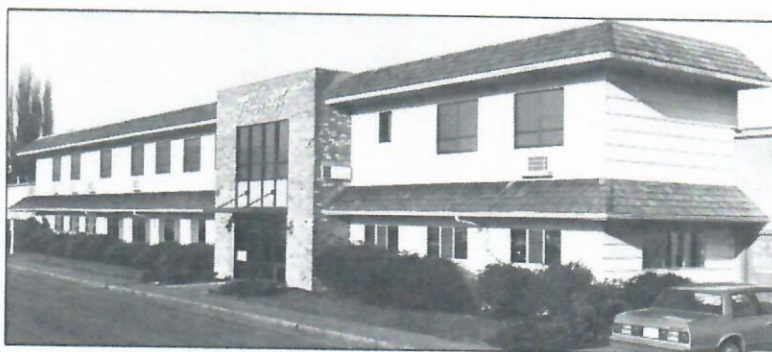
*These men, like me have all Retired*

Tollycraft Corporation maintains an experienced team of directors and executive officers, each one a respected member of their business circles. Their expertise and familiarity with high level management, gives Tollycraft the business wisdom it needs to sustain controlled growth and prosperity.

Tollycraft cruisers, yachts and sailboats are marketed entirely through a small, close-knit dealer organization. These individuals are experienced marine dealers who know boating and cruising and are ready to assist each purchaser in the proper use of his boat.

Tollycraft's strong dealer support program assures every dealer and new boat buyer a continued commitment to honest warranty service, national media exposure and quick handling of replacement parts.

When R. M. Tollefson set out 46 years ago to build the finest yachts and cruisers, he set his standards high. Through a strategic blend of experienced management, modern production methods, astute engineering and classic styling, Tollycraft Corporation has been able to meet or exceed this long term commitment, enabling them to be a strong competitor in the marine industry.



Tollycraft's modern office and manufacturing facilities in Kelso, Washington covering over 156,000 square feet.

*Now is 170,000 sq ft*