

**TOLLYCRAFT--AHEAD OF IT'S TIME**



The cabin liner and deck are raised above a 26' Sedan hull.

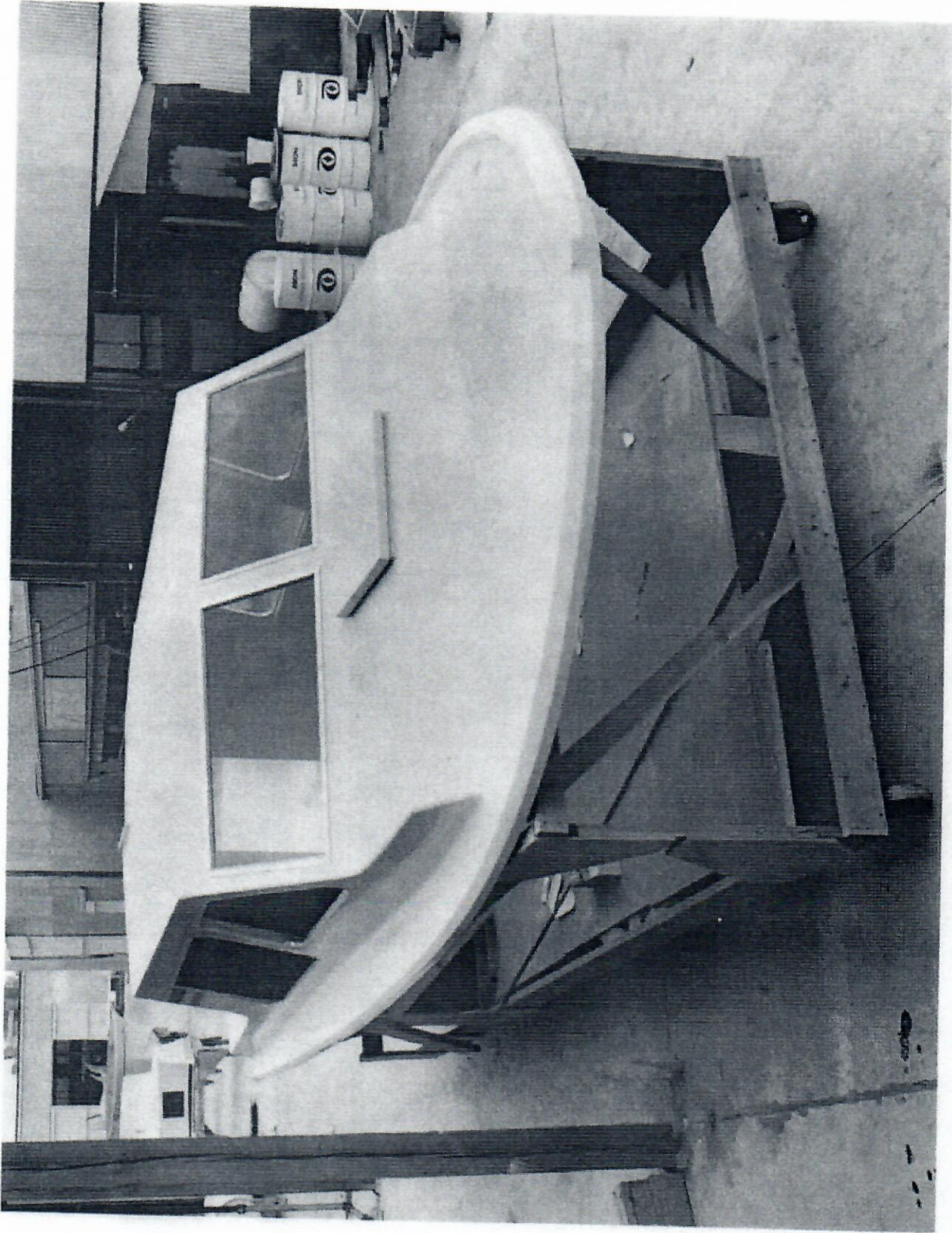


The deck and liner are lowered onto the hull.



The cabin is fibreglassed to the hull.

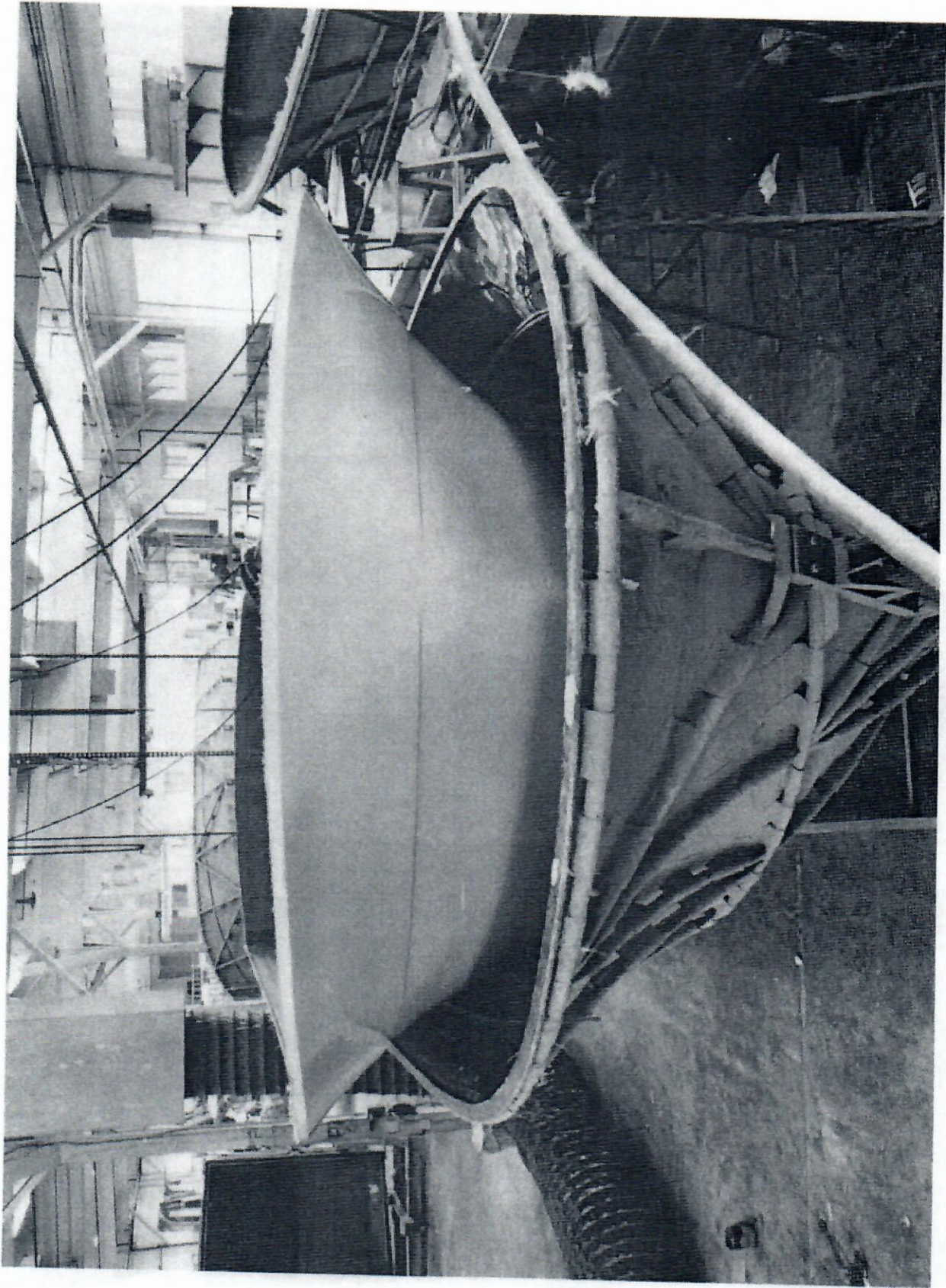




On most models the entire deck, cabin top, and cockpit are molded in one piece.



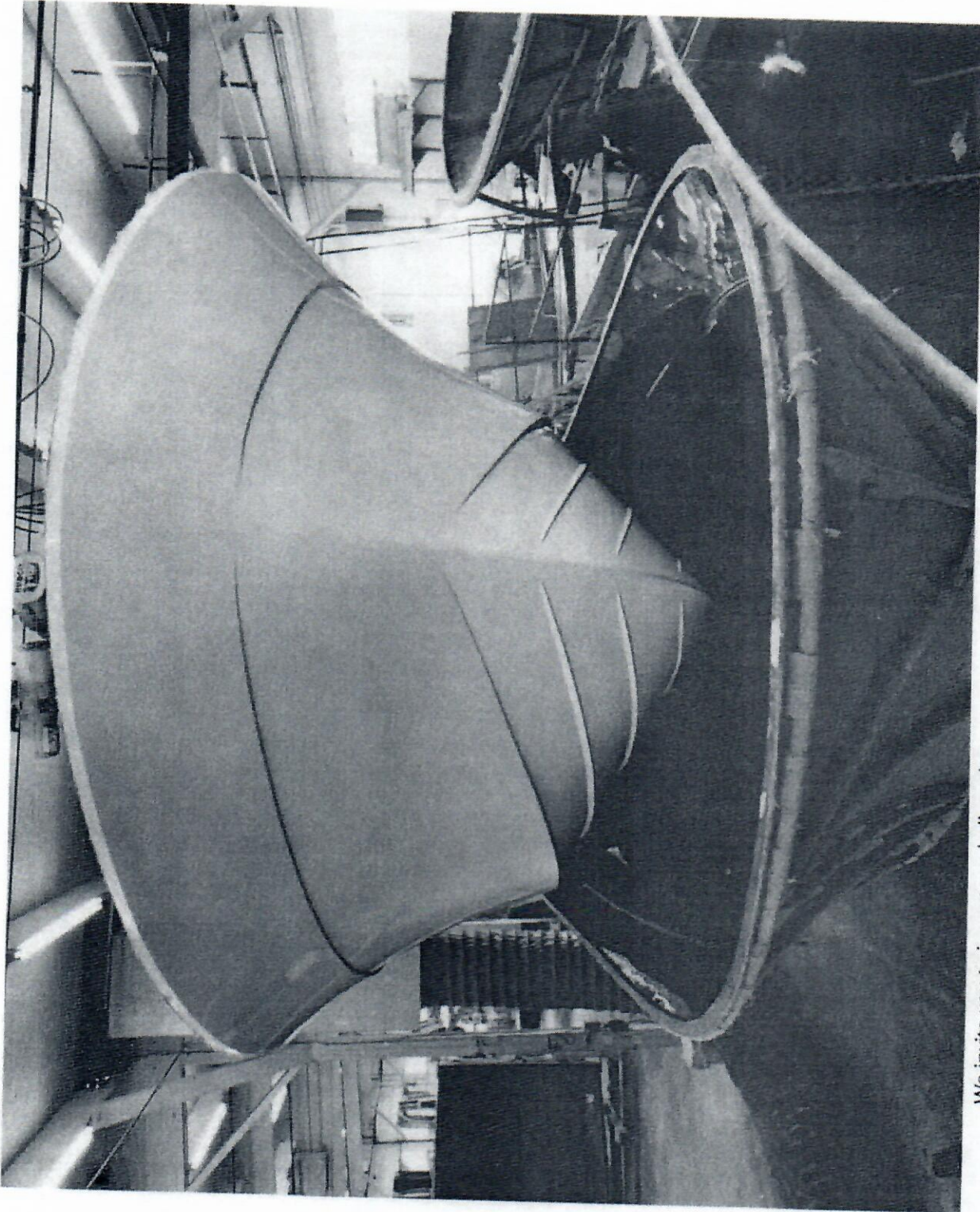
# WHY TOLLYCRAFT BOATS ARE BETTER



All Gel-Coats are molded in.



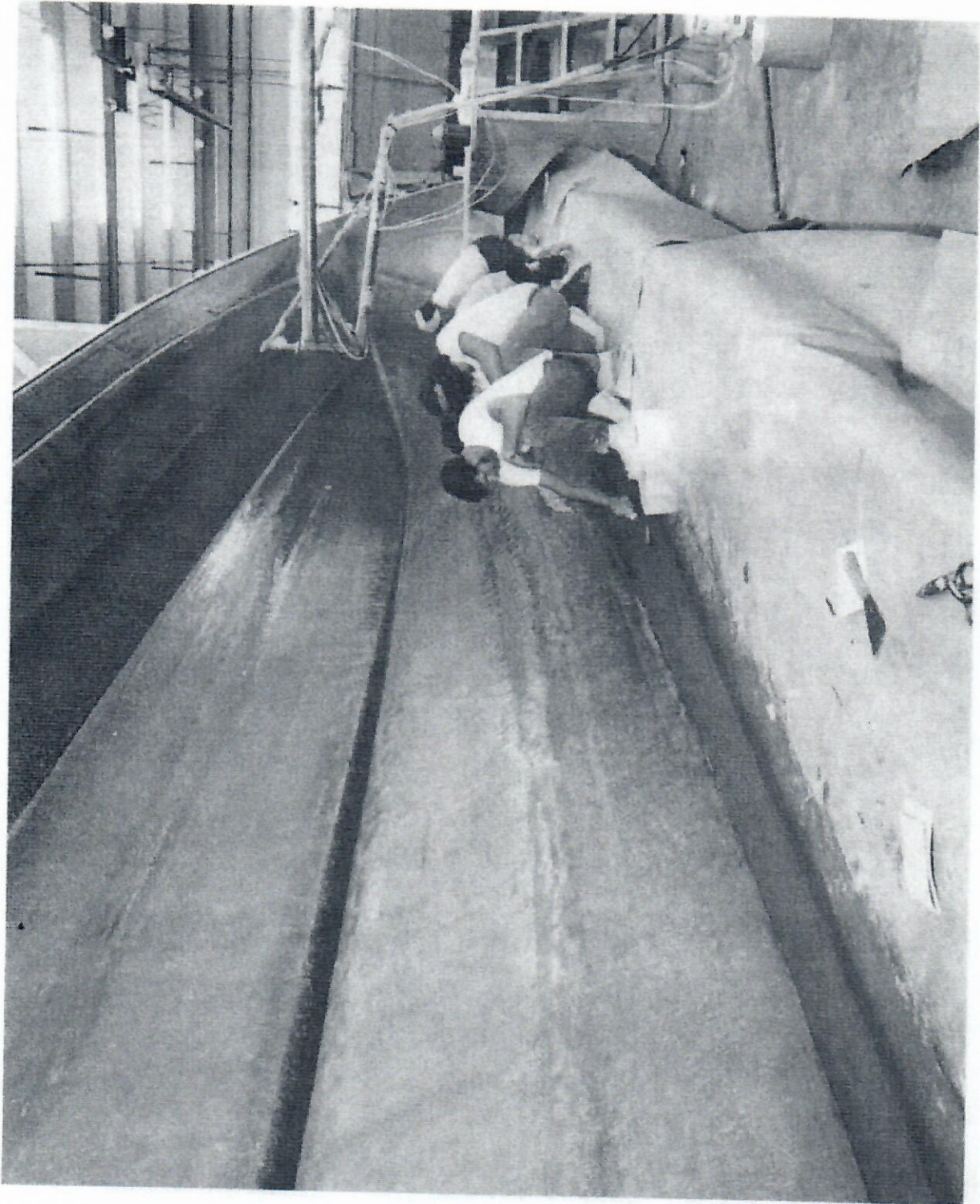
## WHY TOLLYCRAFT BOATS ARE BETTER



We invite you to inspect our hulls as they come out of the mold. Only perfect molds and production methods can produce molded parts of this superb quality.

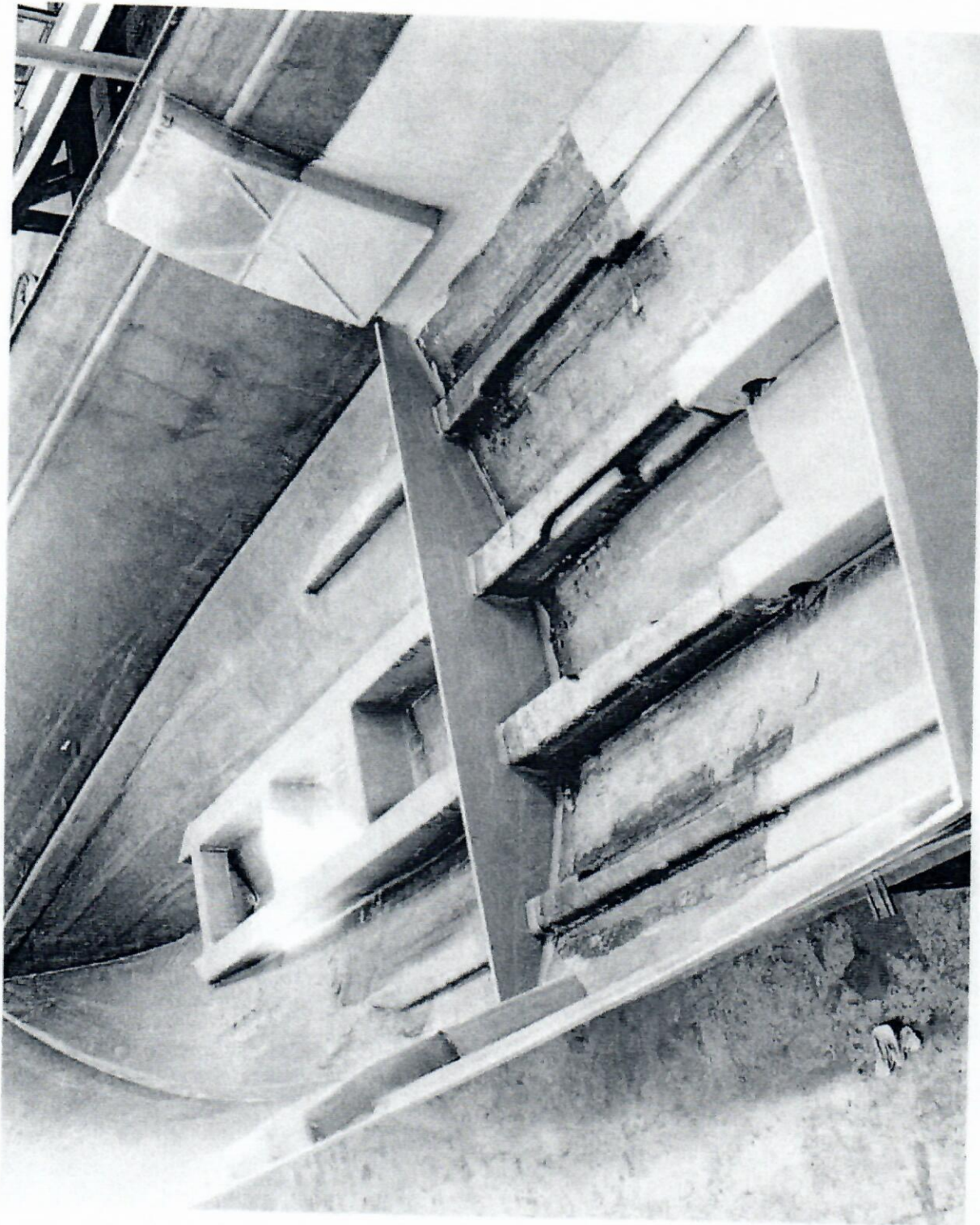


# WHY TOLLYCRAFT BOATS ARE BETTER



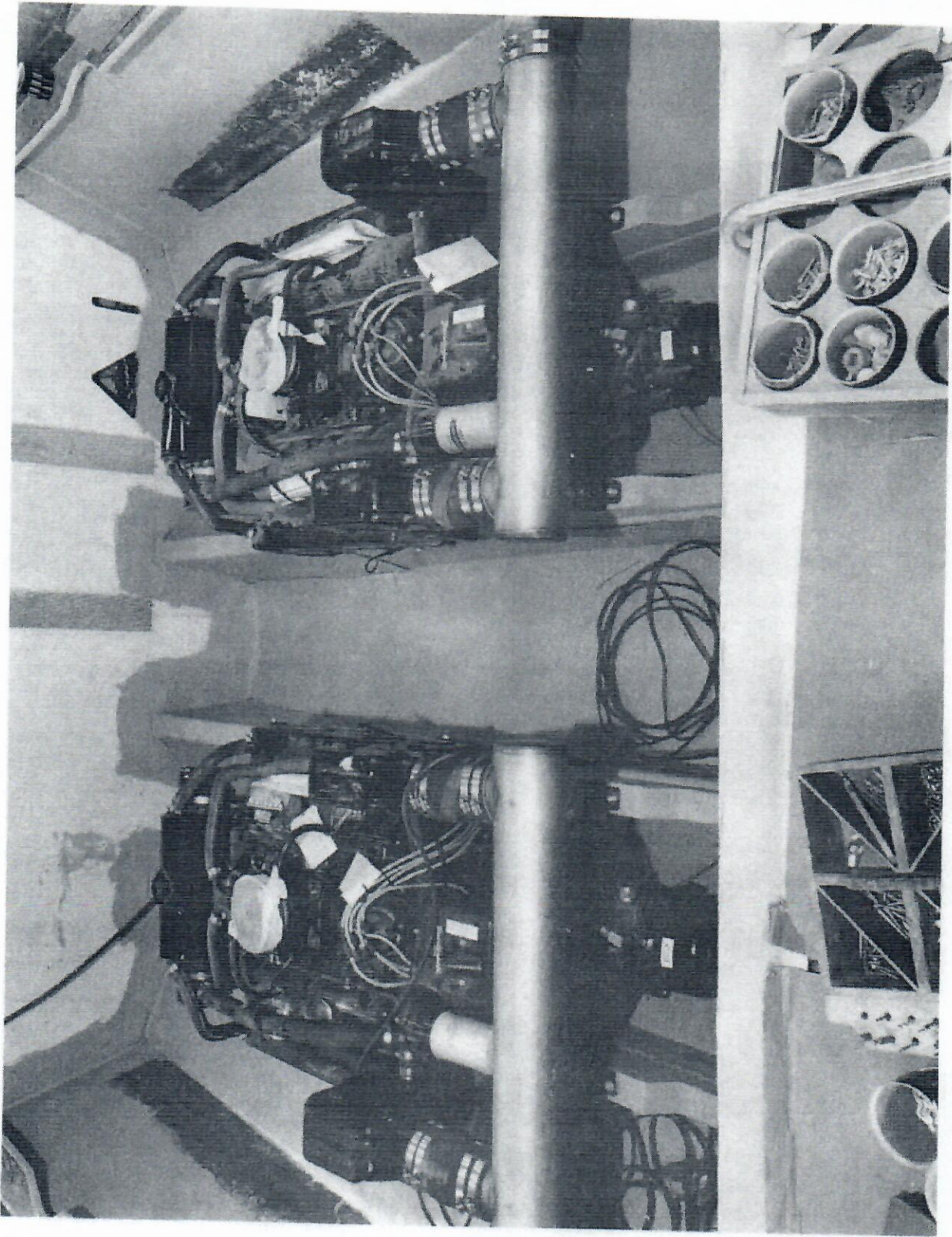
The one piece fiberglass hulls are laid up by hand.





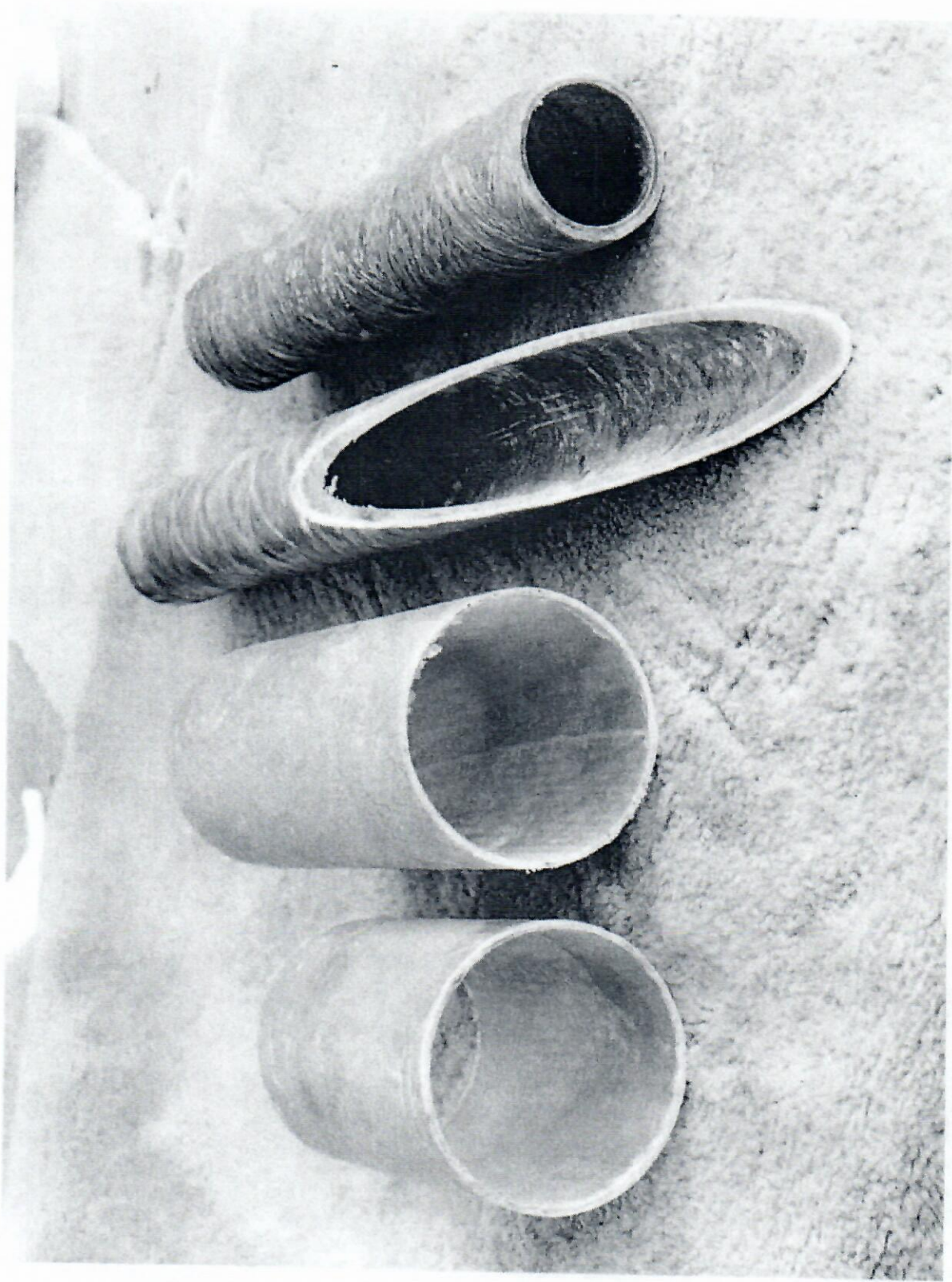
Engine stringers and longitudinal are molded fiberglass, permanently bonded to the hull.





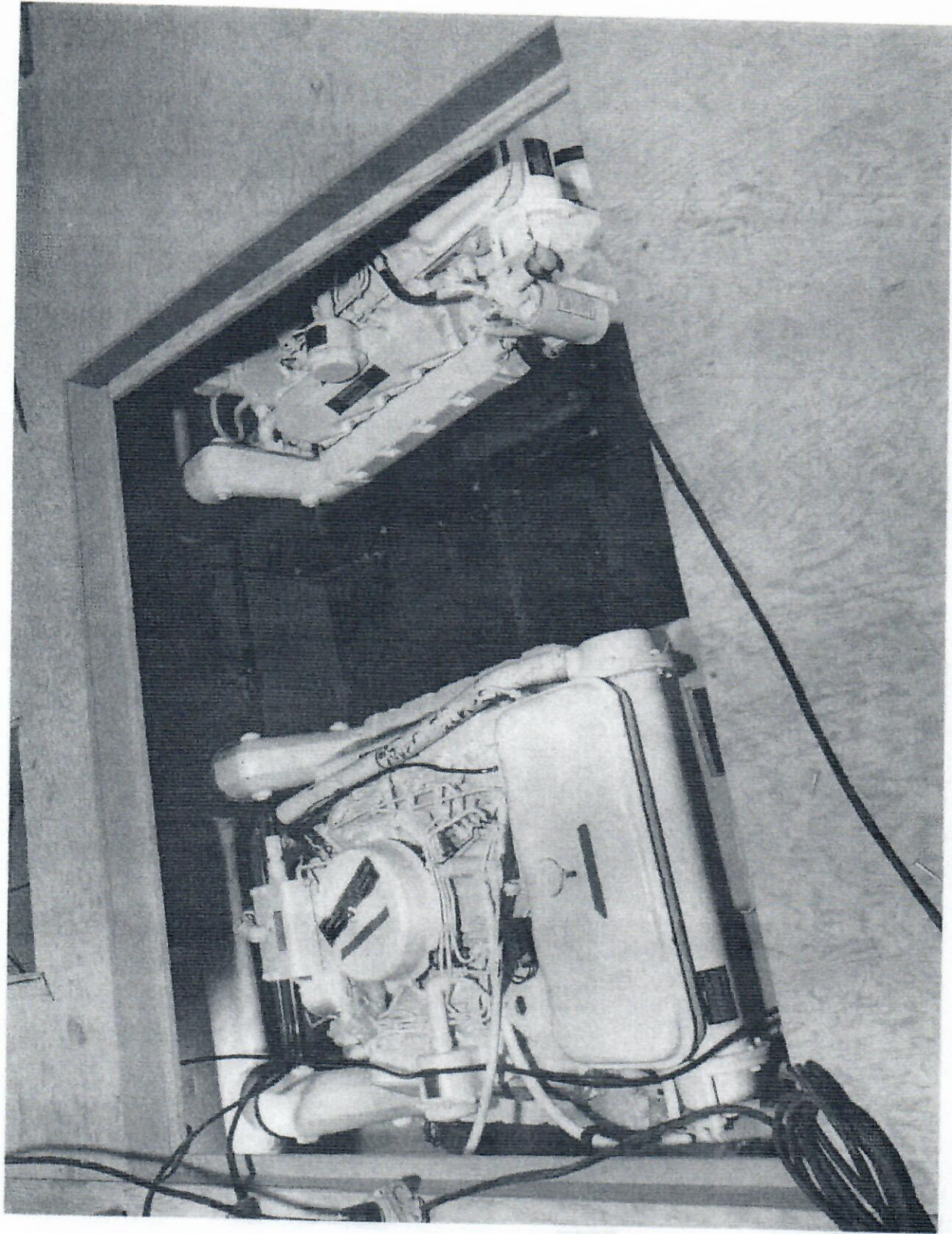
Fresh water cooling is standard on all 1976 inboard engines.





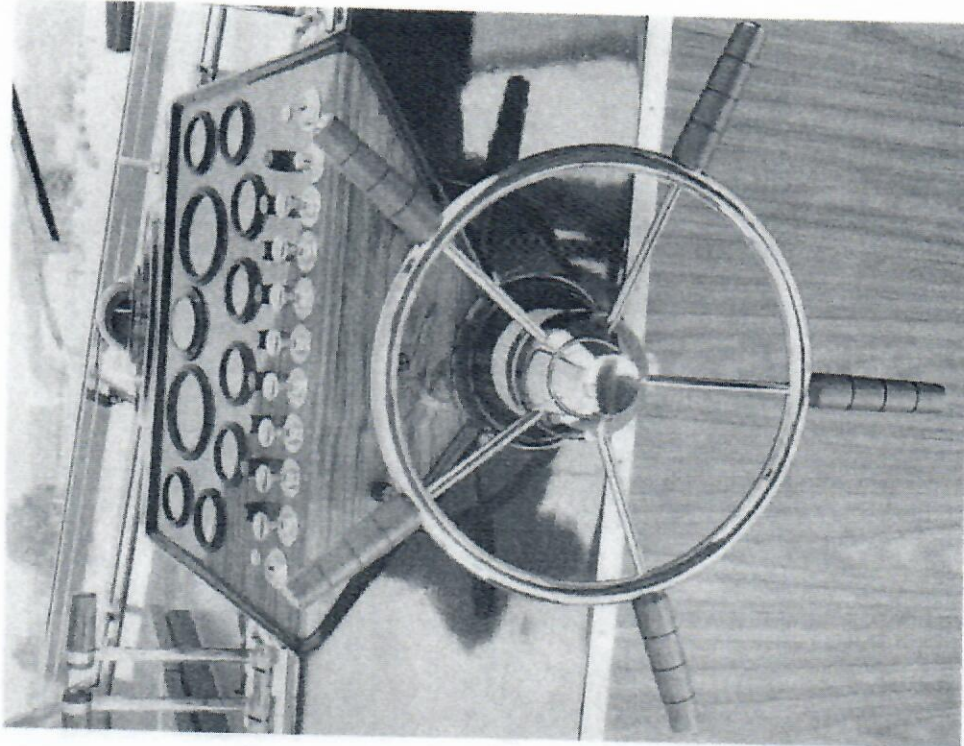
Fiberglass exhaust tubing (left) and heavy duty fiberglass shaft-log tubing (right) are used on all inboard models.





Caterpillar deisel's being installed in the 48' Prototype.





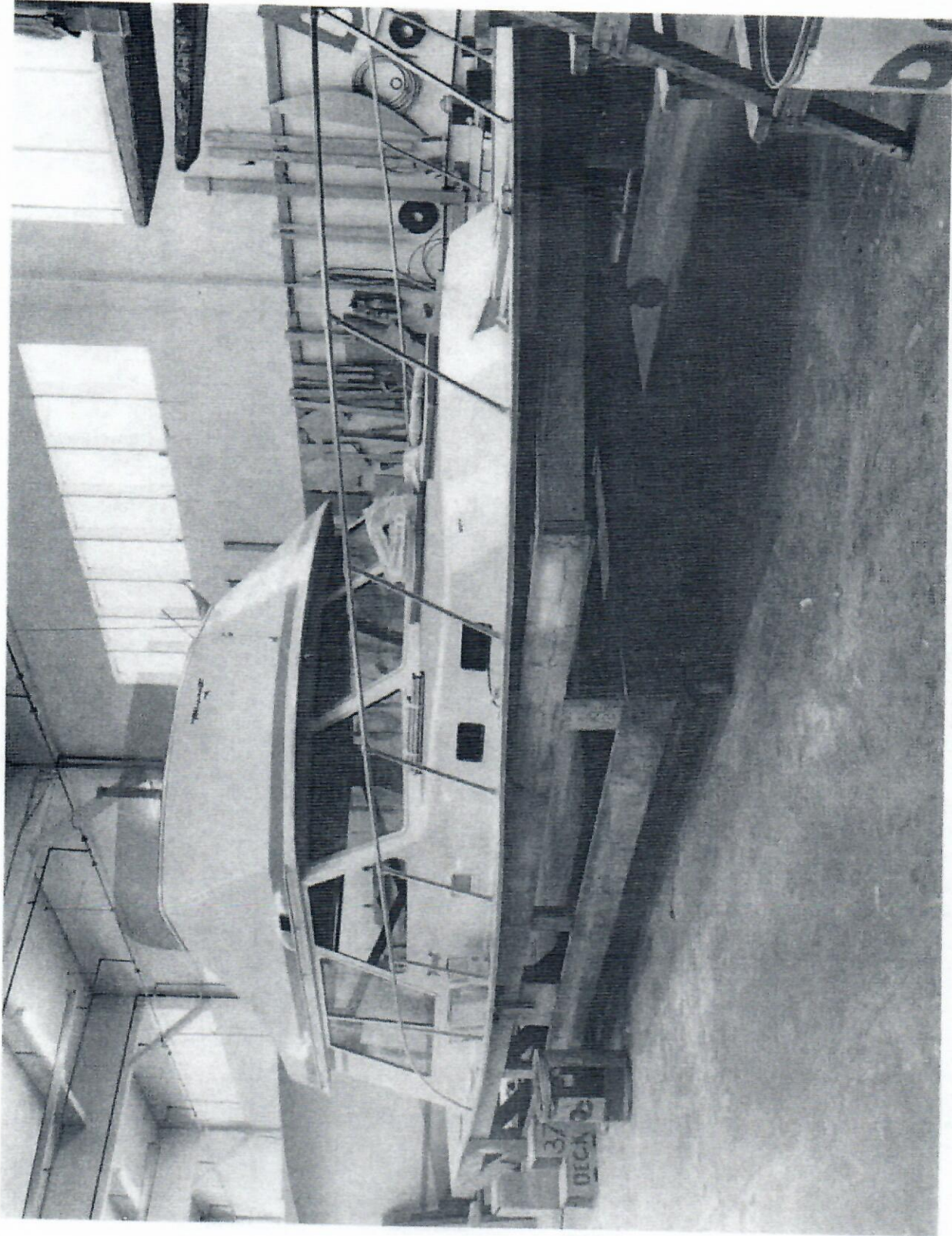
Removable fuse caps on instrument panel for easy access.



Plug-in wiring circuits minimize wiring problems.



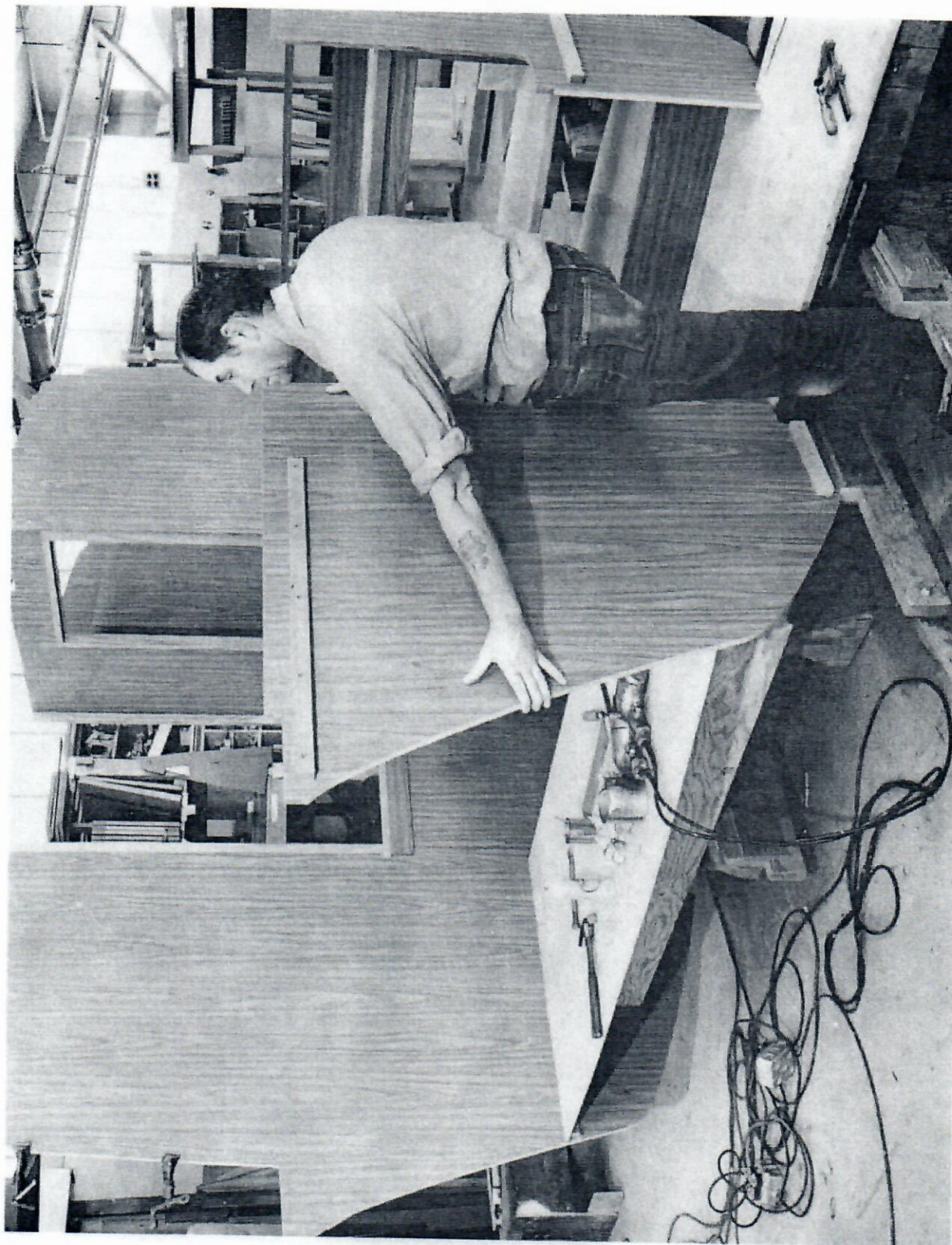
# WHY TOLLYCRAFT BOATS ARE BETTER



Each deck is completely outfitted by itself.



# WHY TOLLYCRAFT BOATS ARE BETTER



All Cabin units are pre-assembled to insure structural uniformity and strength.



# WHY TOLLYCRAFT BOATS ARE BETTER



Professional upholsterers construct the generously deep foam cushions and bunks.



# WHY TOLLYCRAFT BOATS ARE BETTER



Perfection in every detail is shown in a finished Tolly. Unmatched woodwork and finishing, beautifully tailored drapes and upholstery, all color coordinated.